

June 14th 92

Survey to locate School building in
1st ward - at corner 30th St &
Piquette Ave -

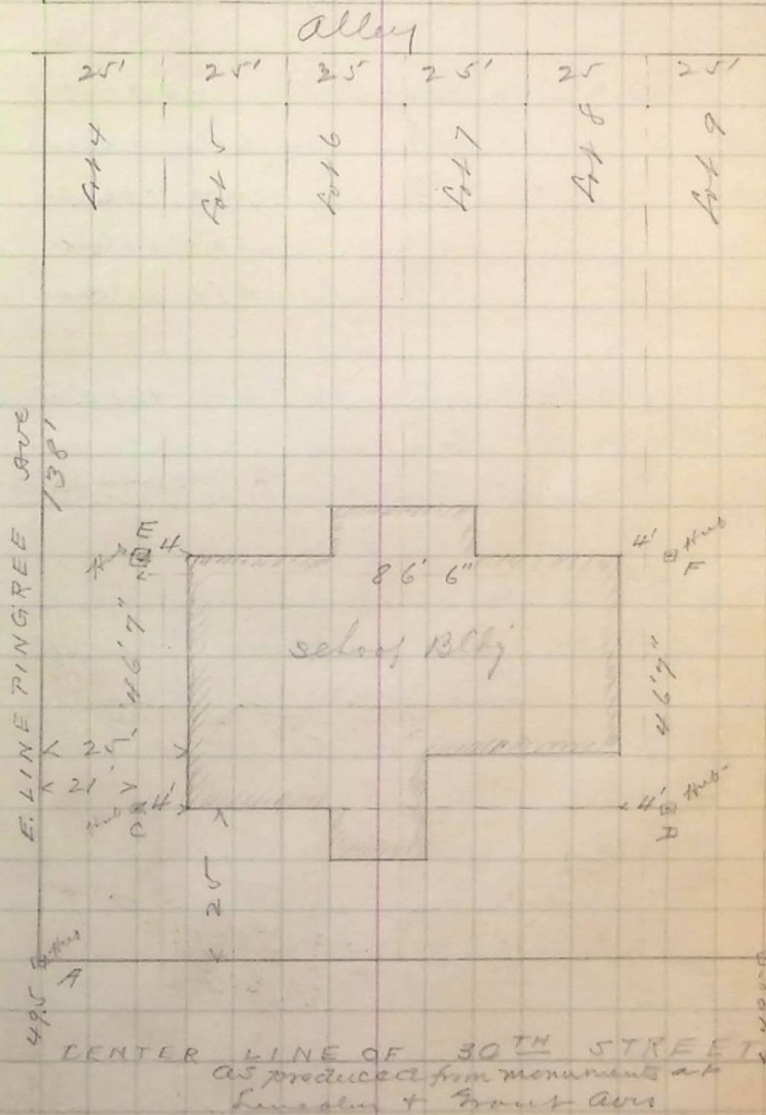
138. at Monument on 30th & Grant - Transit at
" " 30th & Lincoln - I

proport center line of 30th thus
determined - Not - and measure
495 to Hub A - said by Mr Brummitt
& marks Cor of Piquette & 30th -

Also measure 149.5 E from this Hub
A - to Hub B - said to be the
S.E. Cor. of lot 9 - which
Hub is also 495 from center
line produced - 30th St & Hub B is in
1944 from center of Lincoln Ave

Having determined these points, I
locate Hubs as shown on
sketch - for location of
School building - Making
the S.W. Cor. 25' either way
from street lines - as directed
by school board - on the ground

For Grants see next page -



1944
1944